

# Envelope Purse with Buttonholes

The main presser foot used in this recipe is the binding buttonhole foot with stabilizer plate (sold separately). For information on this accessory or any product inquiries, please contact your authorized Brother dealer or visit <http://s.brother/csaab/>

\*We recommend using the binding buttonhole foot to better match the fabric in this recipe, although you can sew buttonholes with the buttonhole foot included in your machine package.

## « Materials »

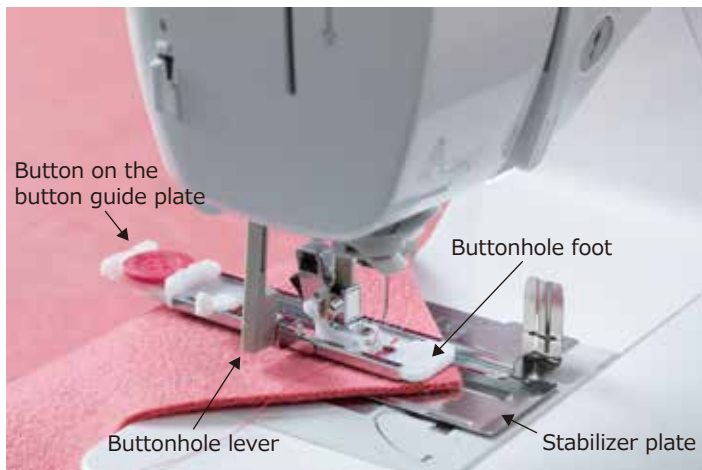
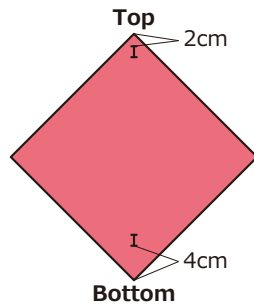
- Felted fabric or melton wool
- Button



diameter: 23mm  
thickness: approx. 2mm

30cm  
30cm  
Max. thickness is approx. 3mm

- 1** Mark on the top and bottom parts of the fabric (2cm far from the top corner and 4cm far from the bottom).



- 2** Sew the buttonholes.

1. Insert the button on the button guide plate.
2. Attach the buttonhole foot to the sewing machine and select a stitch.
3. Position the fabric with the front end of the buttonhole mark aligned with the red marks on the sides of the foot, and then lower the presser foot lever.



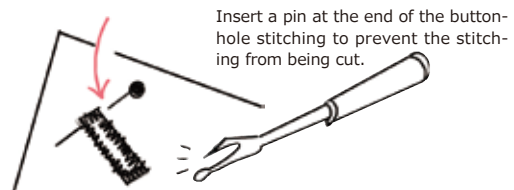
- For further details on buttonhole sewing, refer to the instruction manual of your sewing machine.
- For detailed instructions on how to use the binding buttonhole foot, refer to the manual included in the accessory package.



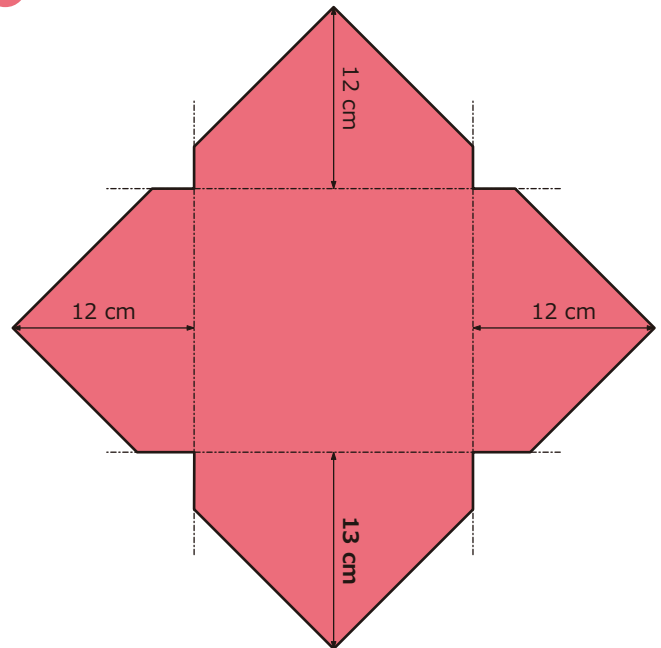
- Before attaching the presser foot, check that there is enough thread in the bobbin.
- Sew trial stitches on fabric that is the same as that used in your project.
- When attaching or removing the presser foot, make sure to slide the presser foot from the back of the presser foot holder.
- When finish sewing, make sure to raise the buttonhole lever, and then remove the fabric.
- The included ball point needle 90/14 is useful when using the stabilizer plate.



- 3** Use a seam ripper to gently cut towards the pin and open the buttonhole.



- 4** Cut 4 notches, one on each side as shown below.



- 5** Fold the left and right sides towards the center and sew on the button. Then, fasten the button and you're done!

