

# JANOME BULLETIN

## For 9 mm max. stitch width models **Lap-Seam Foot** (Finished width 9 mm)

This foot can provide perfect looking and durable seams on medium-heavy weight to heavy weight fabrics. You can create beautiful lap-seams without ironing.



Part No. 202-463-007

### **Point 1** Finished to a width of 9 mm

With the guides and curves of the foot, fabric can be folded neatly with just a light touch.

9 mm wide flat felled seams can be created with the groove on the back side.



Back side of the foot

### **Point 2** Easy-to-see guidelines

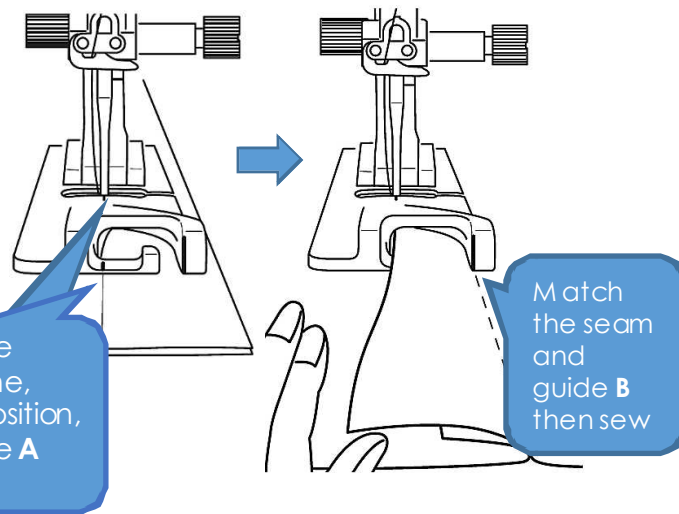
Easy-to-see guidelines support making lap-seams.



Needle position

B

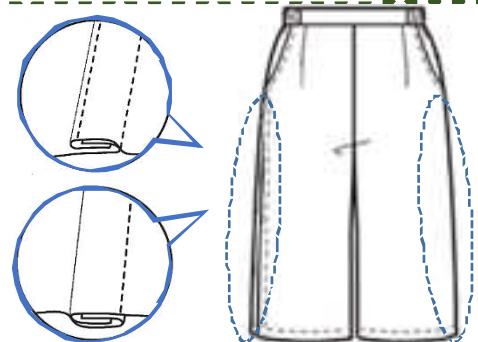
Match the finished line, needle position, and guide A then sew



Match the seam and guide B then sew

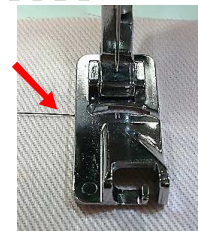
### **Point 3** Two kinds of finish

- 2 seam lines shown on the right side of the fabric: Place the wrong sides of the fabric together and sew.
- 1 seam line shown on the right side of the fabric: Place the right sides of the fabric together and sew.

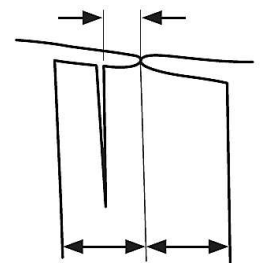


### **Tips** How to finish neatly

- Place the needle thread to the left then start sewing.
- Cut to less than half of the seam allowance as shown in the figure to the right.



Cut to 5-7 mm



5/8 inch (16 mm) seam allowance